

Appendix A

**Explanation of Changes to
Polling Districts and Polling Places**

Relocation of Polling Stations

1. Polling Station: Kingsland Church, 86 London Road

Ward: Prettygate; Polling District: Home Farm (AR)

We have used the facility at Cococare as a polling station. However, Cococare is no longer able to provide the facility to us.

Going forward we intend to have a polling station at Kingsland Church, on the corner of Straight Road and London Road. Although a forced change, we believe this is a positive change. In terms of the suitability, we believe it is an improvement on the previous venue. It already serves as a community hub. There is ample and easily accessible parking. There is also more than enough room inside the venue.

2. Proposed Polling Station: Roman Circus Visitor Centre, Roman Circus Walk

Ward: New Town & Christ Church; Polling District: Hamilton Road (AJ)

We had previously used Hamilton Primary School, until we recently used the facility at The Pegasus Club on Abbey Field as a polling station for the May 2024 local elections and the July 2024 Parliamentary elections. However, following feedback from voters and staff using the venue, we felt the need to look elsewhere.

Going forward we intend to have a polling station at the Roman Circus Visitor Centre. We believe this is a positive change. In terms of the suitability, we believe it is an improvement on the previous venue. There is also more than enough room inside the venue. There is decent parking. The parking is noticeably much closer to the polling station than at the Pegasus Club. On the day the centre's workers will either work from home or park elsewhere.

3. Proposed Polling Station: St Cedds Church Hall, Icen Way

Ward: Shrub End; Polling District: Shrub End (BF)

In recent years we have used Paxman Academy as a polling station. However, the school informed us that we would be unable to use their site after the May 2024 election – although they kindly agreed for us to be able to use the site again in July when the General Election was announced at short notice.

Going forward we intend to have a polling station at St Cedds Church. Although a forced change, we believe this is a positive change. We try to avoid using any school as a polling station where possible. The venue meets our suitability requirements.

Realignment of Polling Districts

There are a few areas where the new county division boundaries intersect existing polling districts. We propose realigning the polling district boundaries to align with, or at least account for, the new county division boundaries. In terms of administering an election, this makes pragmatic and operational sense. Descriptions are given below of proposals affecting individual areas. The affected areas are illustrated with screenshotted maps at the end of this document.

1. Ward: Highwoods

See figures 1, 2 and 3.

Where the new Essex County division boundaries of Colchester Constable, to the north, and Colchester St Johns, to the south, meet the line intersects two existing polling districts; AN East Highwoods and AO West Highwoods, effectively quartering the two polling districts into four parts (A, B, C, D in figure 2).

We propose merging the two parts (A and B) below the county division boundary line that runs along Severalls Lane. We then propose renaming this polling district as AN Highwoods.

We also propose merging the two parts (C and D) above Severalls Lane. We then propose renaming this polling district as AO Severalls.

Administratively, this makes pragmatic sense. It is worth noting most of the area on the northern side of Severalls Lane is industrial and there are no residential properties other than the Severalls Lane Caravan Park. Hypothetically, this area could have been merged with the AP Myland East polling district (E in figure 2). However, this district is in Myland Community Council, whereas the areas discussed above are outside of the Myland Community Council area.

2. Wards: Highwoods and St Anne's & St John's

See figures 1, 2 and 3.

Where the new Essex County division boundaries of Colchester Constable and Colchester St Johns meet the line intersects from the St Anne's & St John's ward into a small area across the ward boundary, into the Highwoods ward in a small part of the AN Highwoods East polling district. This small area is marked F in figure 2. G In figure 2, shows part of BN Ipswich Road polling district in the St Anne's & St John's for reference.

Administratively and operationally, the only option here is to create a separate polling district for the small number of houses in this pocket. We propose naming this polling district ANX North Ipswich Road.

3. Ward: Greenstead

See figure 4.

Where the new Essex County division boundaries of Colchester St Johns and Colchester Wivenhoe St Andrew meet, the line intersects the two polling districts BI Avon Way and BJ Greenstead Road.

We propose a small part of BI Avon Way polling district being included in the BJ Greenstead Road polling district. This is the area between St Andrews Avenue to the north and Greenstead Road to the south, and from The Chase to west and to the Greenstead Roundabout to the east.

4. Ward: Greenstead

See figure 5 and 6.

Where the new Essex County division boundaries of Colchester St Johns and Colchester Wivenhoe St Andrew meet, the line intersects the two polling districts; BH Hawthorne Avenue and BM Longridge.

We propose a small part of BH Hawthorne Avenue polling being included in the BM Longridge polling district. This is the area to the south of Avon Way, including Titania Close and Oberon Close.

5. Ward: Castle Ward

See figure 7.

Where the new Essex County division boundaries of Colchester North and Colchester Lexden meet, the line intersects through the northwest tip of the AH Cowdray Avenue polling district.

This corner of the polling district is wedged between two different Colchester City Council wards, Lexden and Braiswick ward wrapping around from the West and Mile End ward to the North. We could technically create a polling district for the rogue area, however, there are currently no residential properties in that area, and as a floodplain it is unlikely to be the site of future residential development. It would also be administratively peculiar to maintain a polling district with no properties contained within. Therefore, we propose no change to the polling district boundary here.

Maps of Polling Districts to be Realigned

The maps below show the affected areas discussed above for illustrative purposes.

Any blue lines are ward boundaries. Red lines are new county division boundaries. Thin black lines are polling district boundaries.

For more clarity, we recommend using the Colchester City Council mapping tool is available online -

property.colchester.gov.uk/NorthgateM3LP/ES/Presentation/Gis/Planning/Map

Figure 1

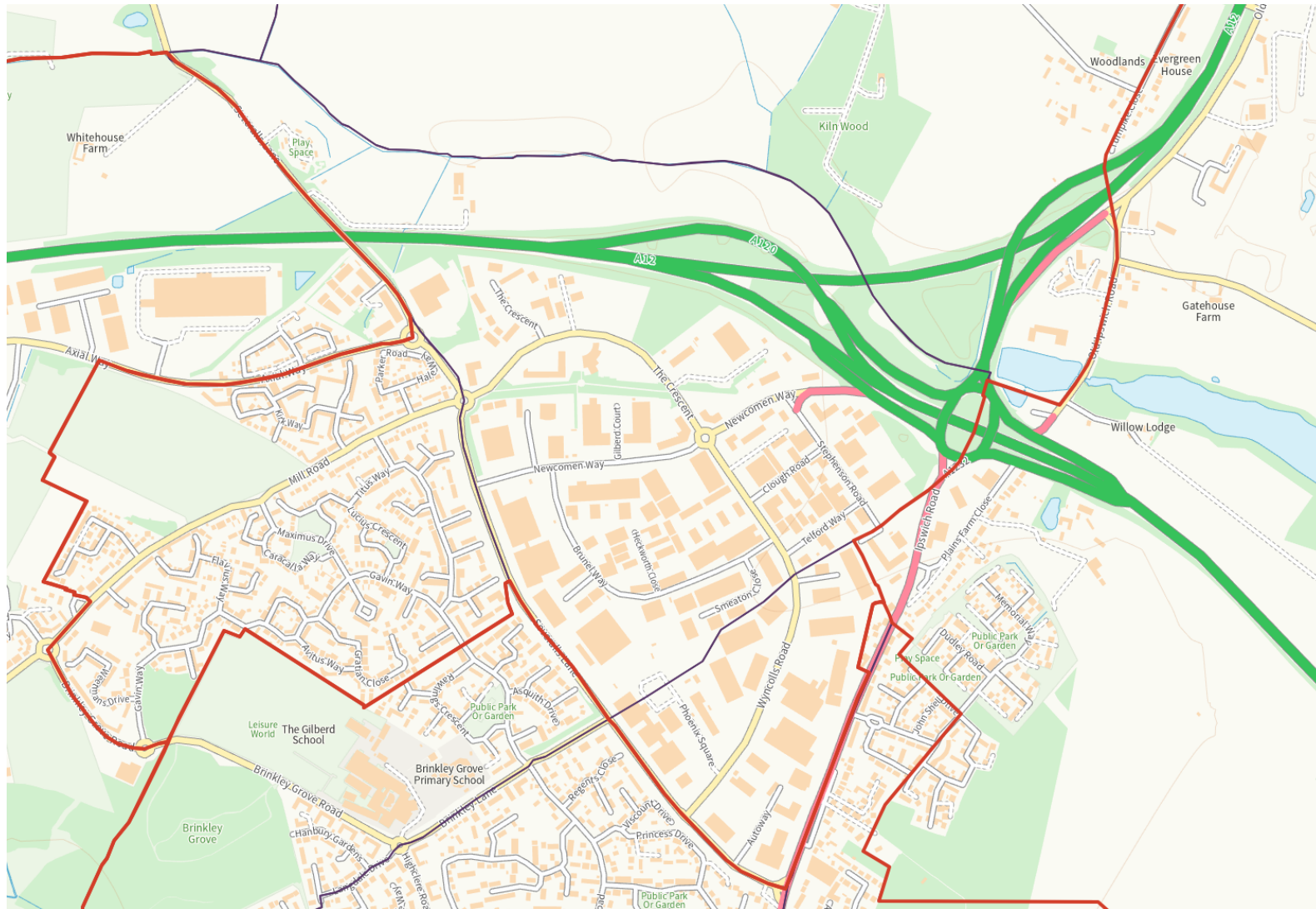


Figure 2

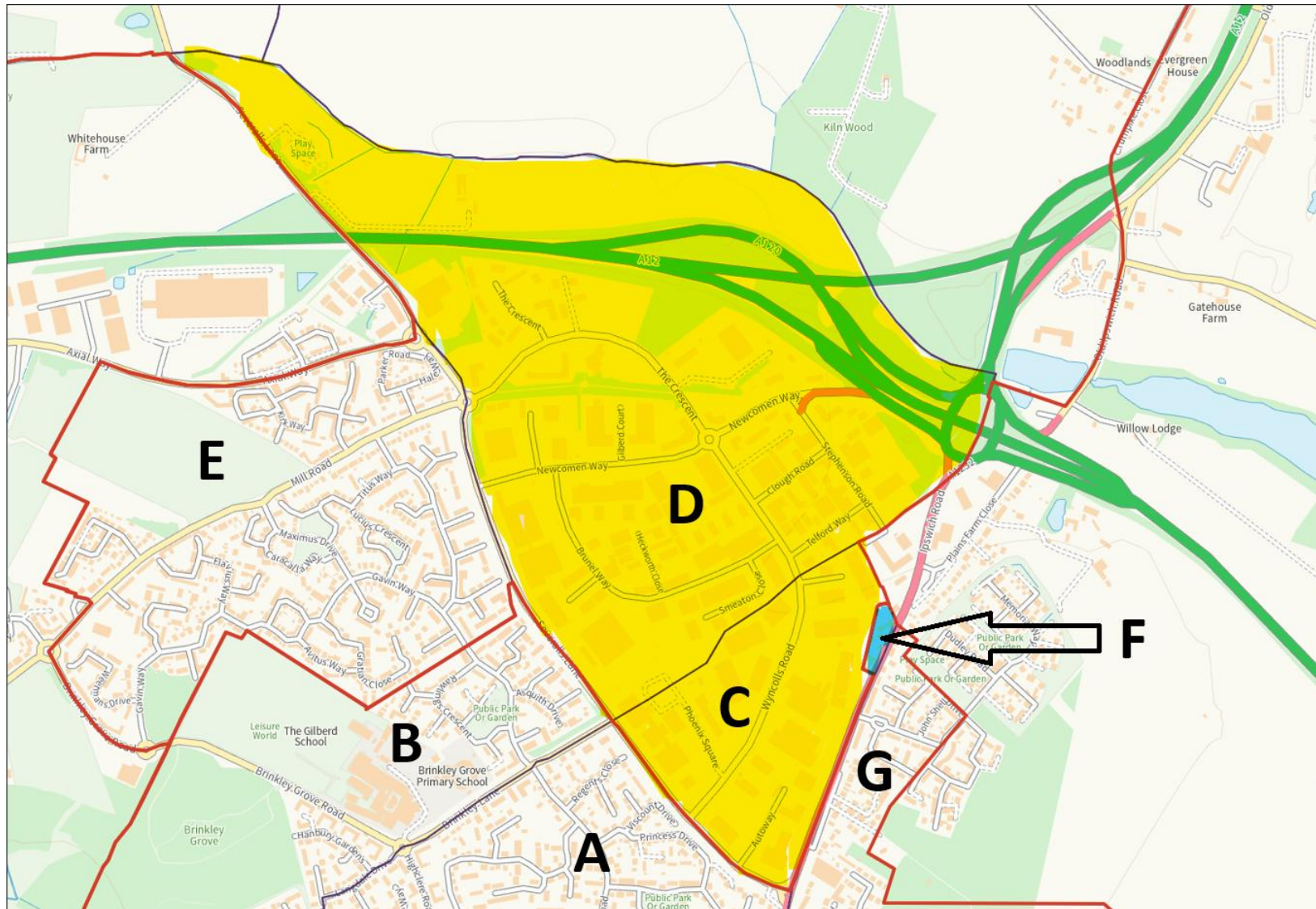


Figure 3

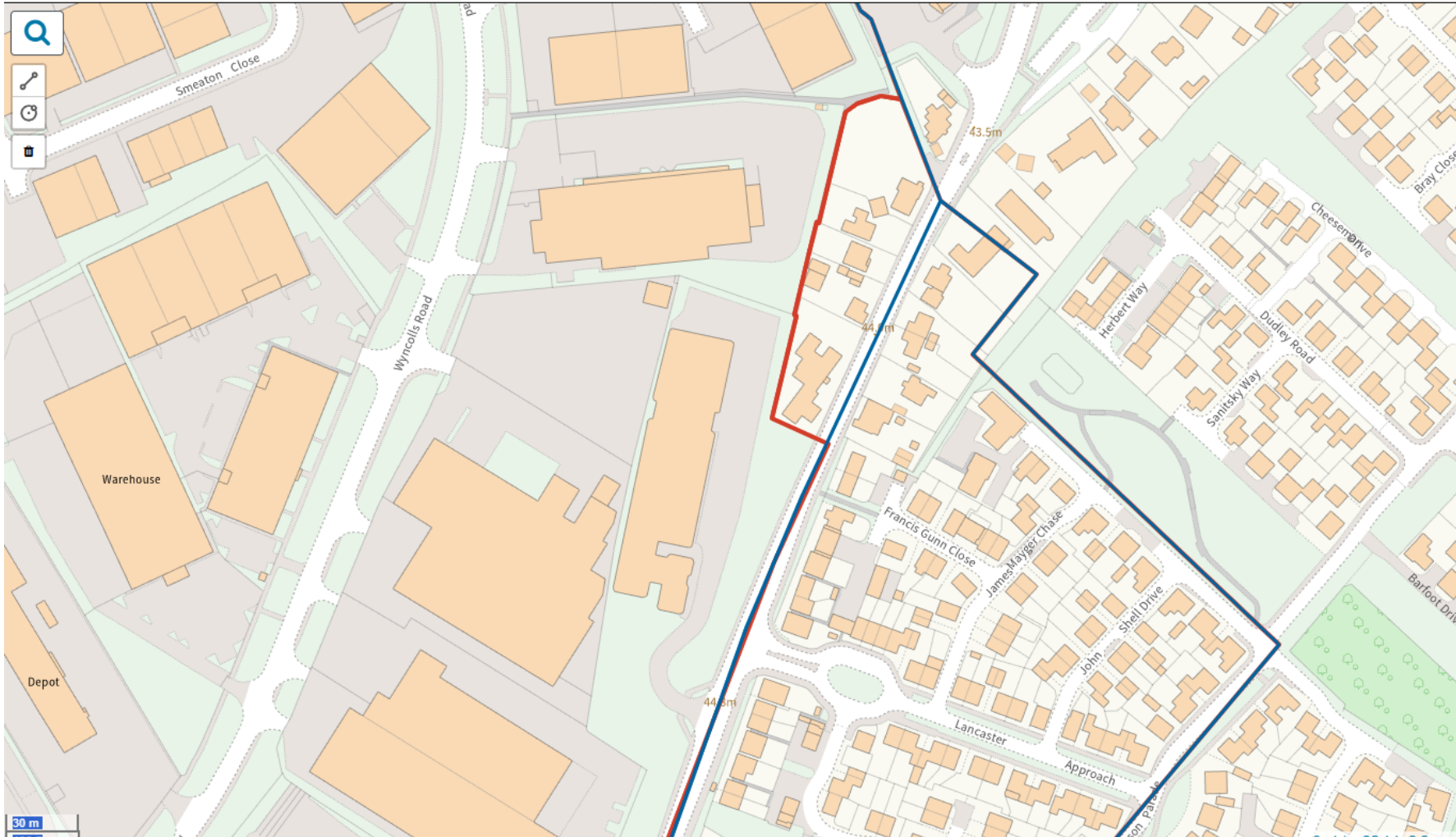


Figure 4

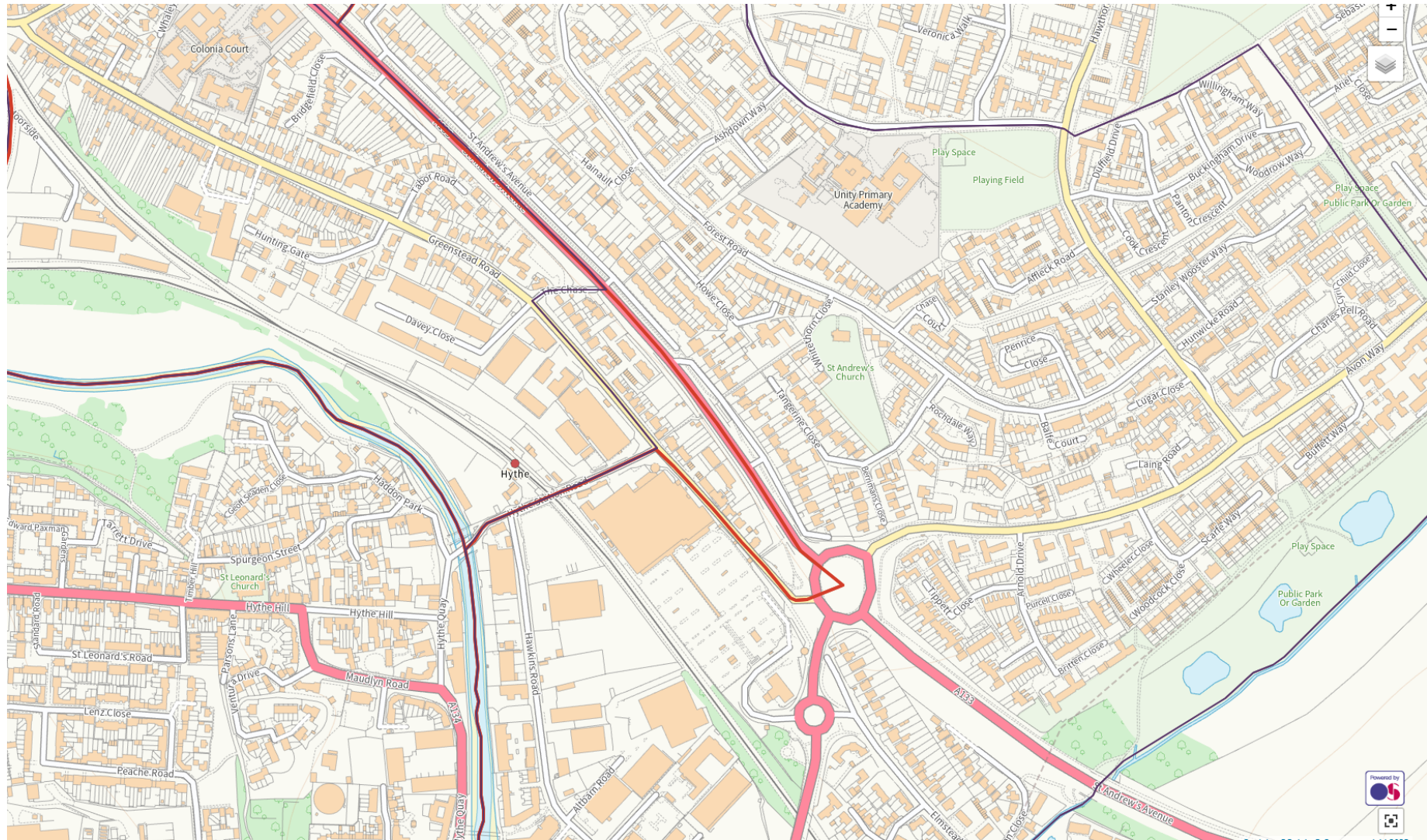


Figure 5

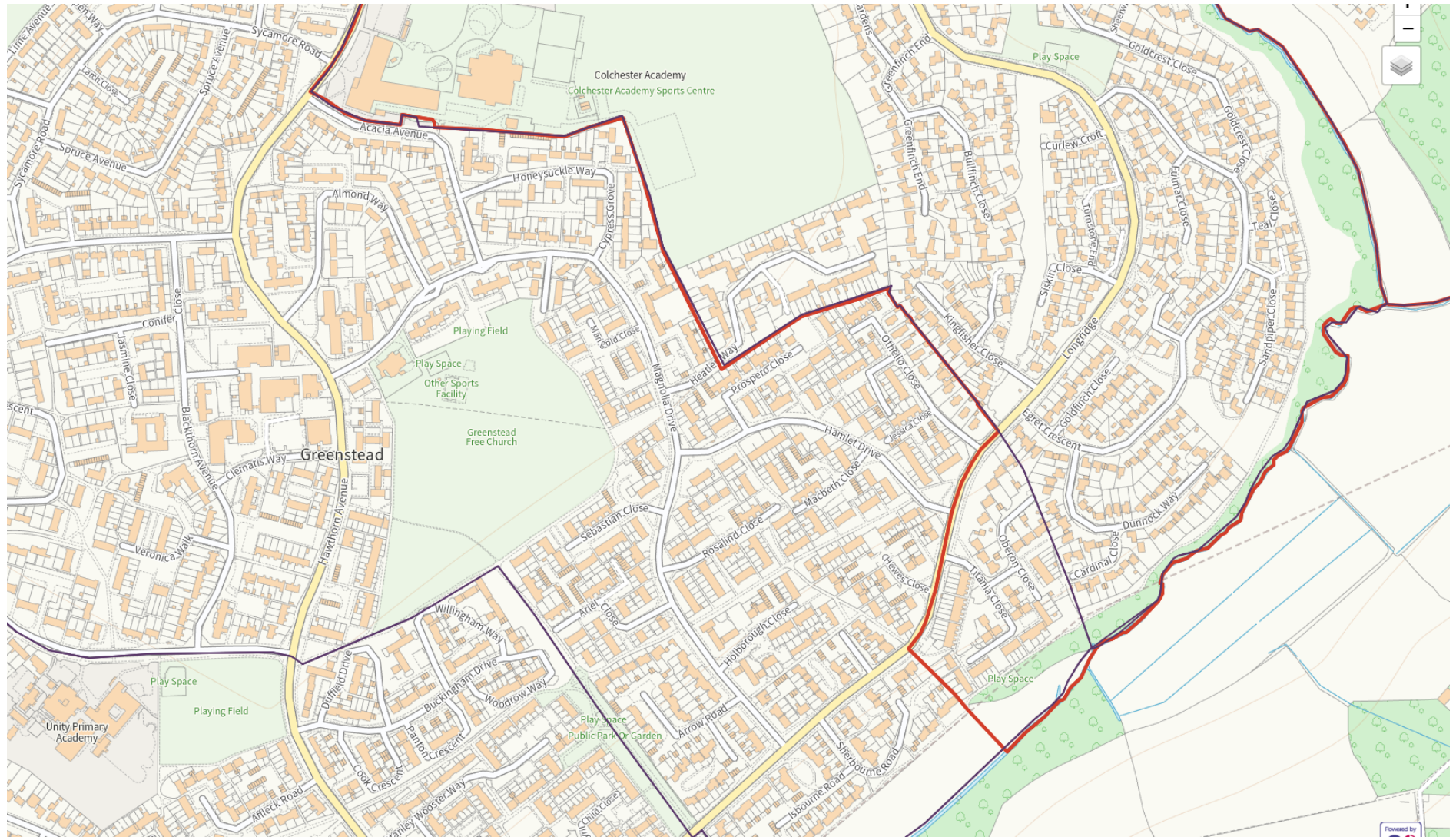


Figure 6

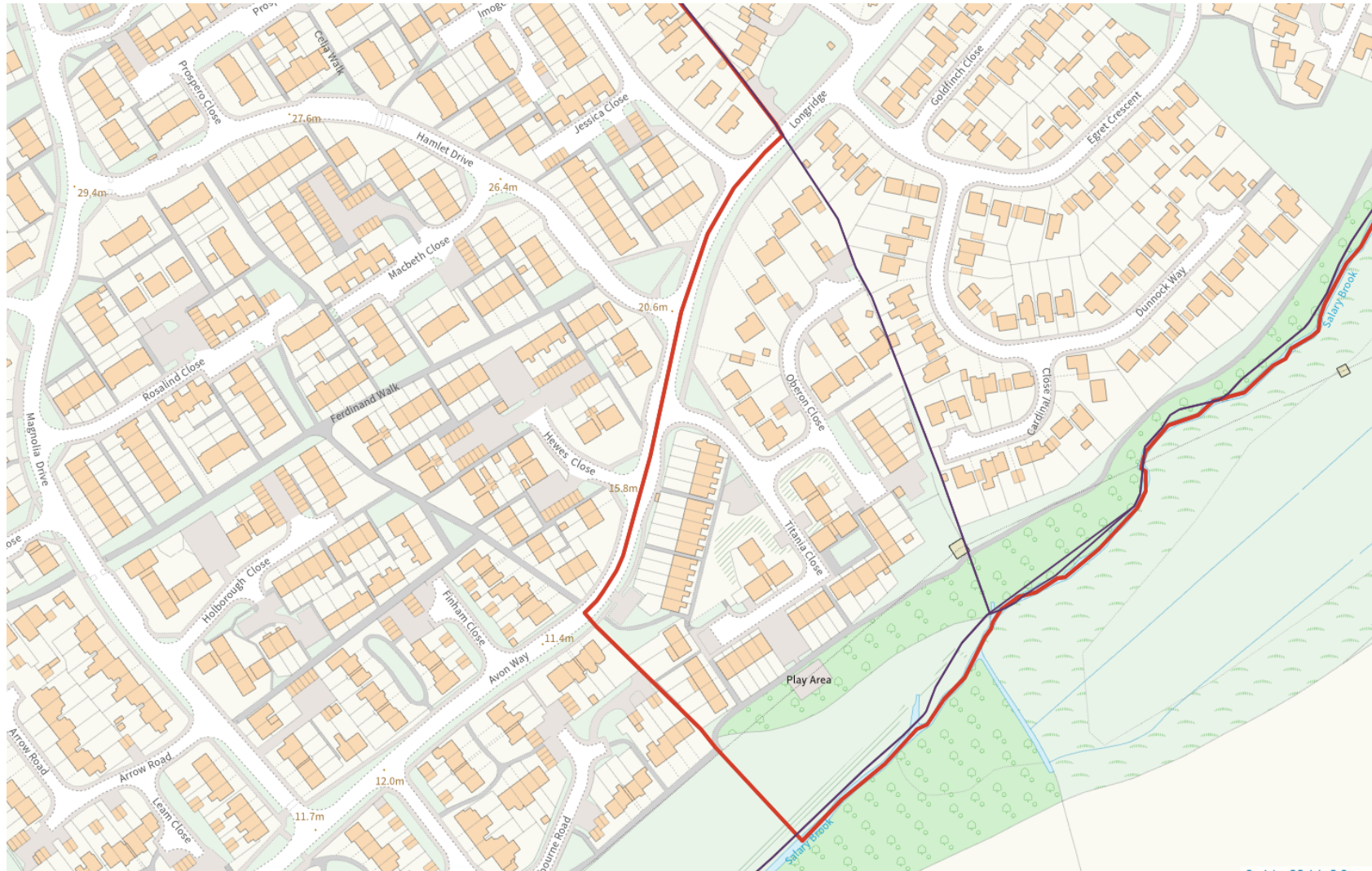


Figure 7

